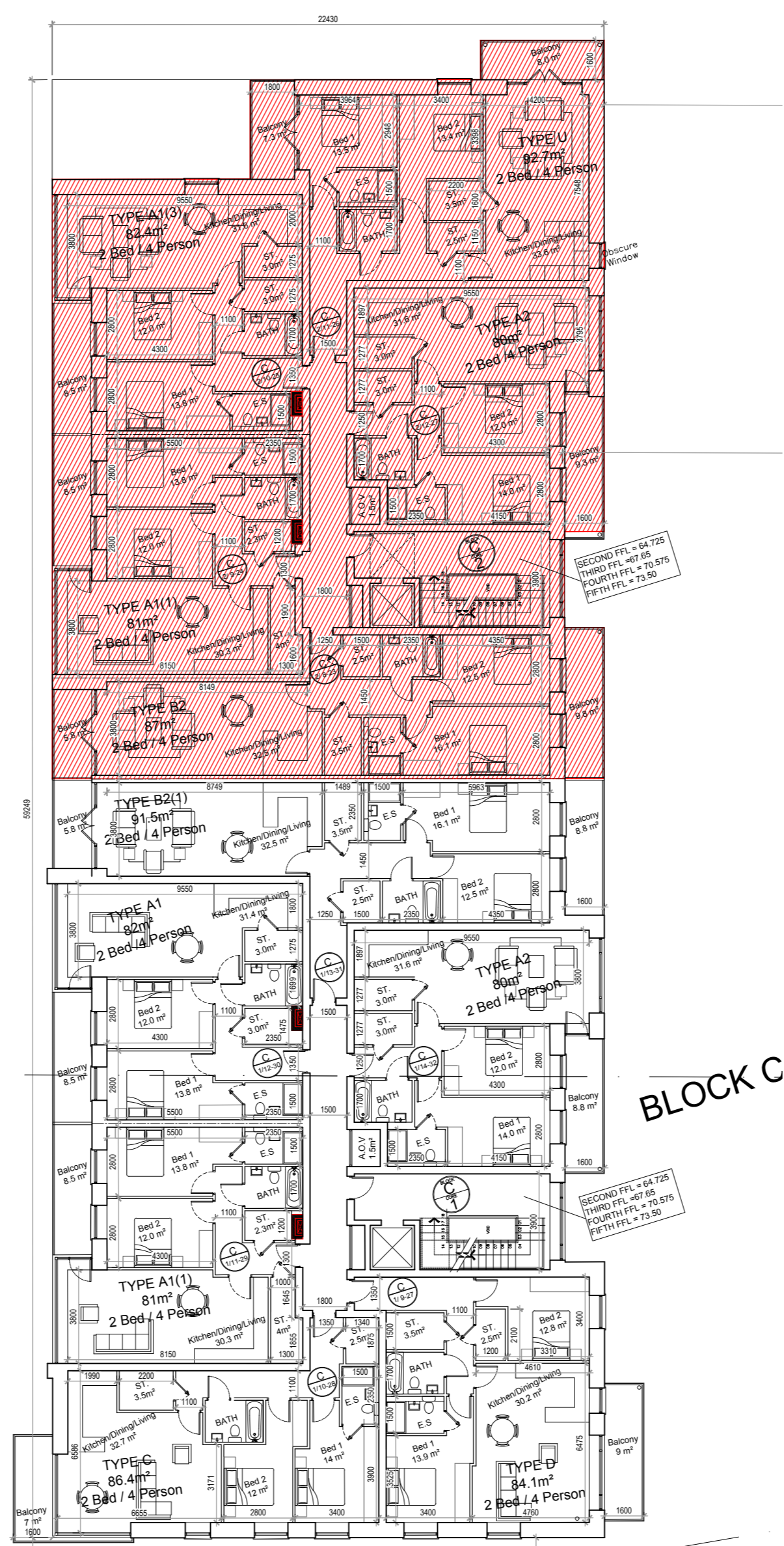
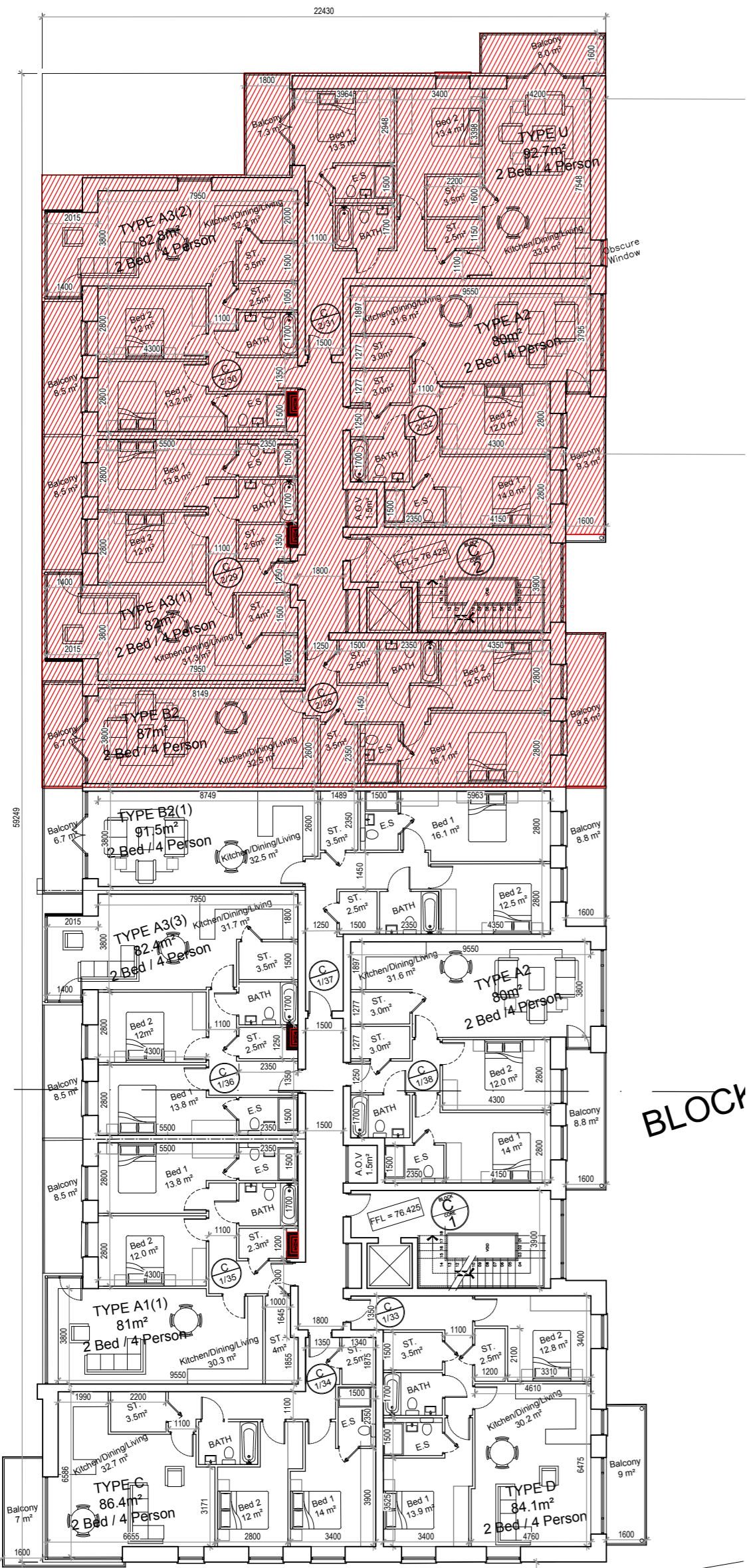


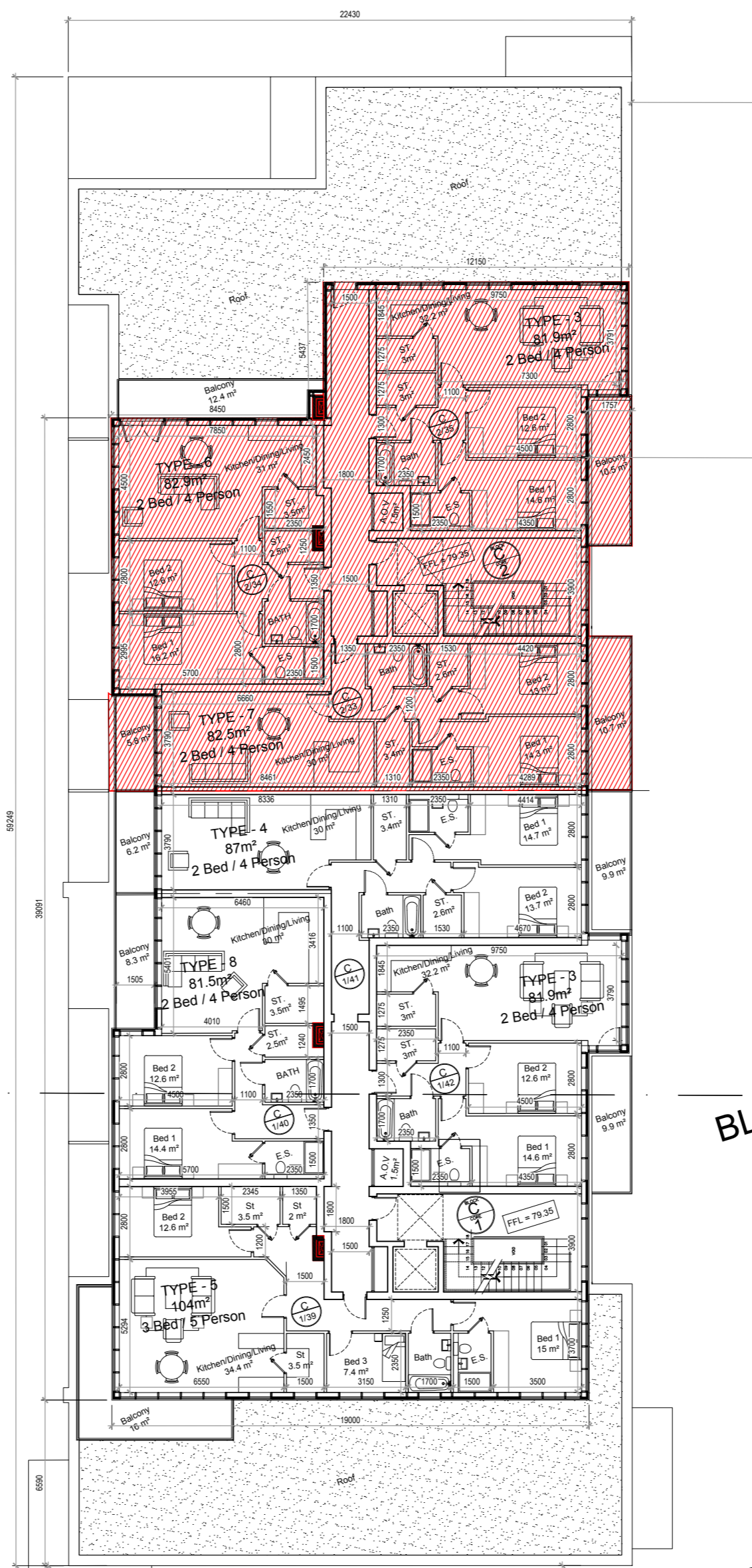
Block 'C', First Floor Plan



Block 'C', Typical, Second, Third, Fourth and Fifth floor Plan

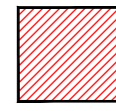


Block 'C', Sixth Floor Plan



Block 'C', Penthouse (Seventh) Floor Plan

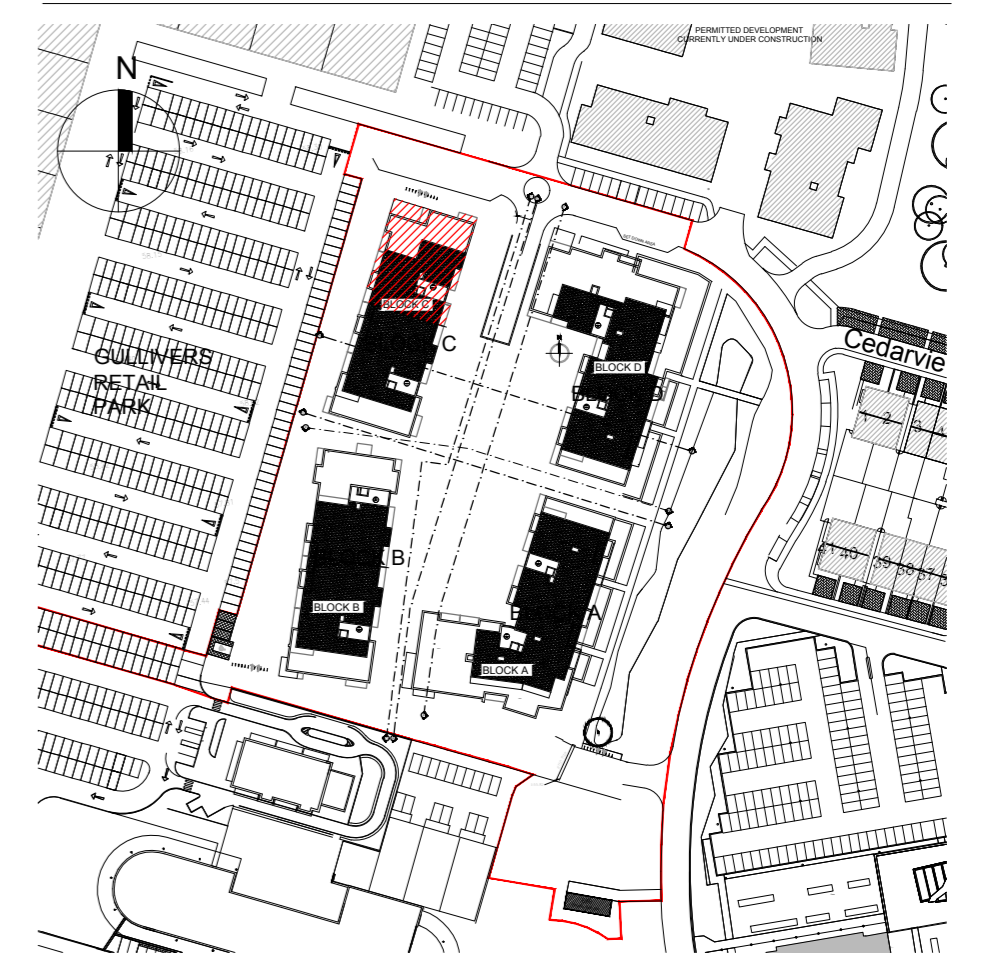
**PART V ALLOCATION**



Total 33 Units

- Apt 3, First Floor, 2 Bed Apartment, 87m<sup>2</sup>
- Apt 4, First Floor, 2 Bed Apartment, 81m<sup>2</sup>
- Apt 5, First Floor, 2 Bed Apartment, 82.4m<sup>2</sup>
- Apt 6, First Floor, 2 Bed Apartment, 92.7m<sup>2</sup>
- Apt 7, First Floor, 2 Bed Apartment, 80m<sup>2</sup>
- Apts 8/13/18/23, Second to Fifth Floor, 2 Bed Apartment, 87m<sup>2</sup>
- Apts 9/14/19/24, Second to Fifth Floor, 2 Bed Apartment, 81m<sup>2</sup>
- Apts 10/15/20/25, Second to Fifth Floor, 2 Bed Apartment, 82.4m<sup>2</sup>
- Apts 11/16/21/26, Second to Fifth Floor, 2 Bed Apartment, 92.7m<sup>2</sup>
- Apts 12/17/22/27, Second to Fifth Floor, 2 Bed Apartment, 80m<sup>2</sup>
- Apt 28, Sixth Floor, 2 Bed Apartment, 87m<sup>2</sup>
- Apt 29, Sixth Floor, 2 Bed Apartment, 82m<sup>2</sup>
- Apt 30, Sixth Floor, 2 Bed Apartment, 82.8m<sup>2</sup>
- Apt 31, Sixth Floor, 2 Bed Apartment, 92.7m<sup>2</sup>
- Apt 32, Sixth Floor, 2 Bed Apartment, 80m<sup>2</sup>
- Apt 33, Penthouse Floor, 2 Bed Apartment, 82.5m<sup>2</sup>
- Apt 34, Penthouse Floor, 2 Bed Apartment, 82.9m<sup>2</sup>
- Apt 35, Penthouse Floor, 2 Bed Apartment, 81.9m<sup>2</sup>

**KEY PLAN (NTS)**



THIS DRAWING TO BE READ IN CONJUNCTION WITH ARCHITECT'S DRAWINGS, AND CONSULTANT ENGINEER'S DRAWINGS AND SPECIFICATIONS.

REFER TO ARCHITECT'S SITE PLAN FOR SPECIFIC NORTH ORIENTATION.

**NOTES:**

DO NOT SCALE FROM DRAWINGS. WORK TO FIGURED DIMENSIONS ONLY. ARCHITECT TO BE NOTIFIED OF ALL DISCREPANCIES.

**REVISIONS**

DATE	DESCRIPTION	No.



PROJECT TITLE: <b>Blackwood Square, Santry</b>	DATE: July'19	DRAWN BY: DB
DRAWING TITLE: <b>Part V Block C, Floor Plans</b>	SCALE: 1:200@A	REVISION:
JOB NO: 14030.7	DRAWING NO: PL27	